

Hirnhäute und Ventrikelwände

Inhaltsverzeichnis

1. Hirnhäute

1.1. Pia mater

- Plexus choroideus

1.2. Arachnoidea mater

- Subarachnoidalraum
- Subduralspalt
- Arachnoidalzotten / Pacchionische Granulationen

1.3. Dura mater

- Falx cerebri
- Tentorium cerebelli
- Dura mater und Periost

2. Ventrikelsystem

- Ventriculi laterales
- Foramina Monroi
- Ventriculus tertius
- Aqueductus cerebri
- Ventriculus quartus
- Foramen Magendie
- Foramina Luschkae

3. Ventrikelwand

- Plexus choroideus, Plexusepithel
- Ependym

4. Blutungen

- epidural
- subdural
- subarachnoidal
- zerebral

Hirnhäute und Gefässe

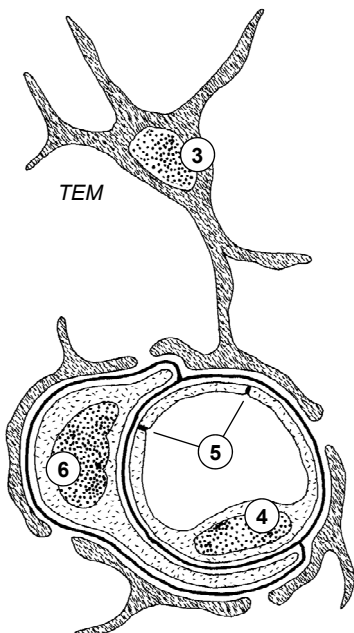
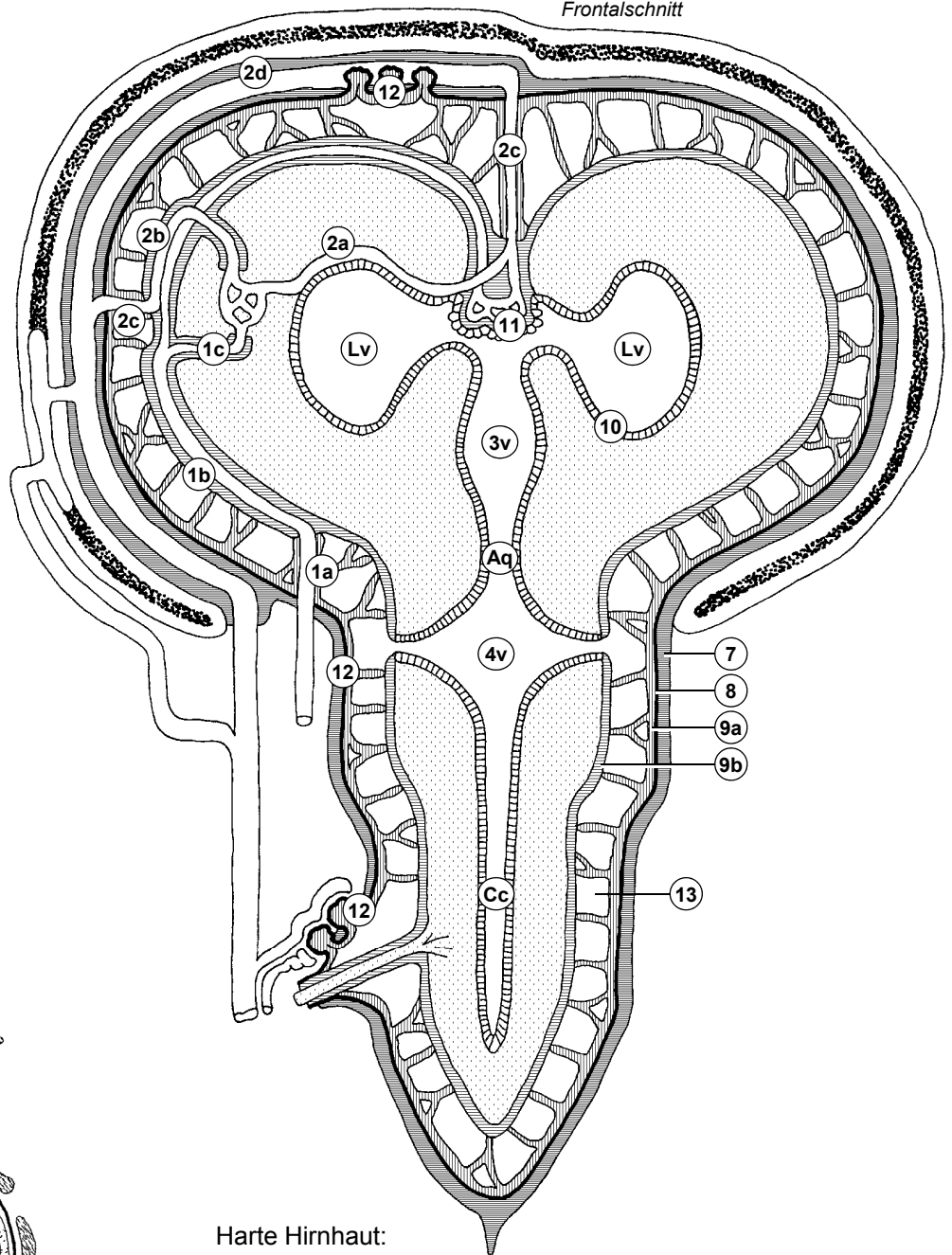
schematischer
Frontalschnitt

- Arterien
 1a - grosses Kaliber
 1b - mittleres Kaliber
 1c - kleines Kaliber

- Venen
 2a - tief
 2b - oberflächlich
 2c - Brückenvenen
 2d - Durasinus

- Blutungen
 1a - subarachnoidal
 2c - subdural
 1c - zerebral

- Bluthirnschranke
 3 - Astrozyt
 4 - Endothelzelle
 5 - Tight junctions
 6 - Perizyt



Harte Hirnhaut:
 7 - Dura mater

8 Neurothel

Weiche Hirnhaut:

- 9a - Arachnoidea
 9b - Pia mater
 10 Ependym
 11 Plexus choroideus
 12 Arachnoidalzotten

13 Subarachnoidalraum

innerer Liquorraum:

- Cc - Canalis centralis
 4v - Ventriculus quartus
 Aq - Aquädukt
 3v - Ventriculus tertius
 Lv - Ventriculus lat.

Ventrikelwand

Lv Ventriculus lat.

- 1 - Cornu ant.
- 2 - Cornu post.
- 3 - Cornu inf.
- 4 - Pars centralis

3v Ventriculus tertius

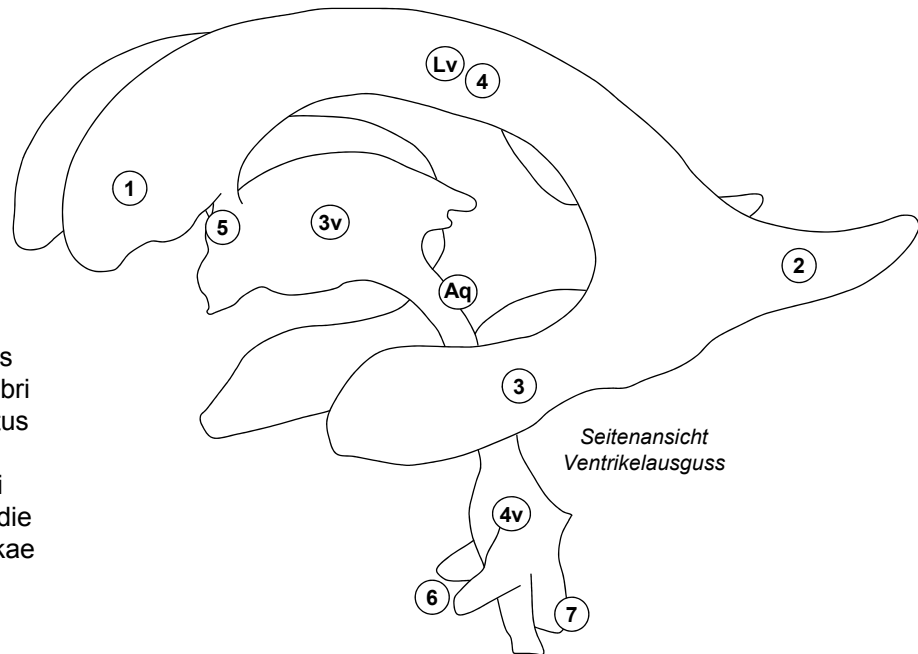
Aq Aqueductus cerebri

4v Ventriculus quartus

5 Foramina Monroi

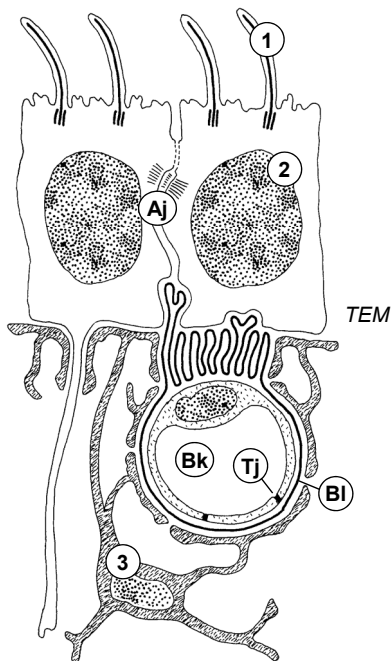
6 Foramen Magendie

7 Foramina Luschkae



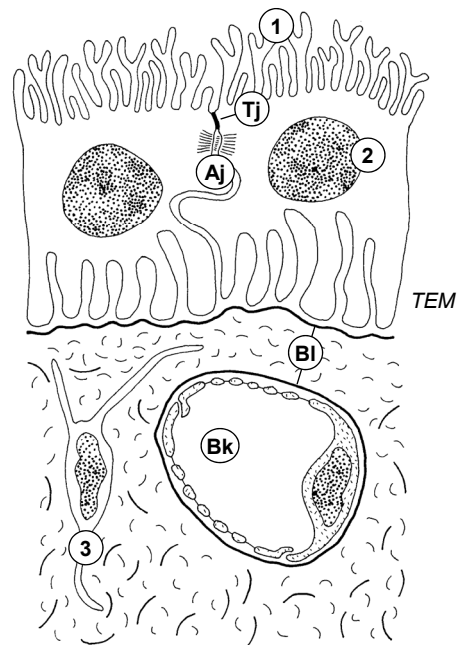
Seitenansicht
Ventrikelausguss

Ependym



- 1 Kinozilien
- 2 Ependymzellen
- Bk Blutkapillare
- Tj Tight junction
- Aj Adhärenz junction
- Bl Basallamina
- 3 Astrozyt

Plexus choroideus



- 1 Mikrovilli
- 2 Plexusepithelzellen
- Bk Blutkapillare
- Tj Tight junction
- Aj Adhärenz junction
- Bl Basallamina
- 3 Fibrozyt (Pia Mater)